

User Manual

Blu-Comm™

Wireless Headset Kit

Made for 2-Way Radios!



RocketScience®
"It takes RocketScience to build stuff this good!"



CE FC RoHS

The Bluetooth word mark and logos are owned by the Bluetooth SIG and used under license by Klein Electronics, Inc.

**Thank you for purchasing the Blu-Comm™.
The worlds FIRST 2-way radio Bluetooth®
product, by RocketScience®.**

**This manual is simple and short,
making it easy to follow.**

The warranty is on the page 9.



RocketScience®
"It takes RocketScience to build stuff this good!"

www.RocketQuality.com

In each package, you should have a charger with 3 wires, a headset with optional boom tube (this helps to reduce the outside noise), a dongle to plug into your radio (see chart on our website), and a round PTT (Push-To-Talk) button. Also, a holster to keep the adaptor neatly connected to your body.

MAKE SURE you charge up everything before you play with it. It affects the life of the battery. Also, it is best to fully run down the battery or close to it before you charge it up. It is VERY important to FULLY charge each time.

It takes about 2 hours to charge fully. The LED lights turn OFF when complete.

Pairing them all together.

This is the hardest part, and can be frustrating the first time you try it. Hang in there....

Start with them all "off", and do them in this order:

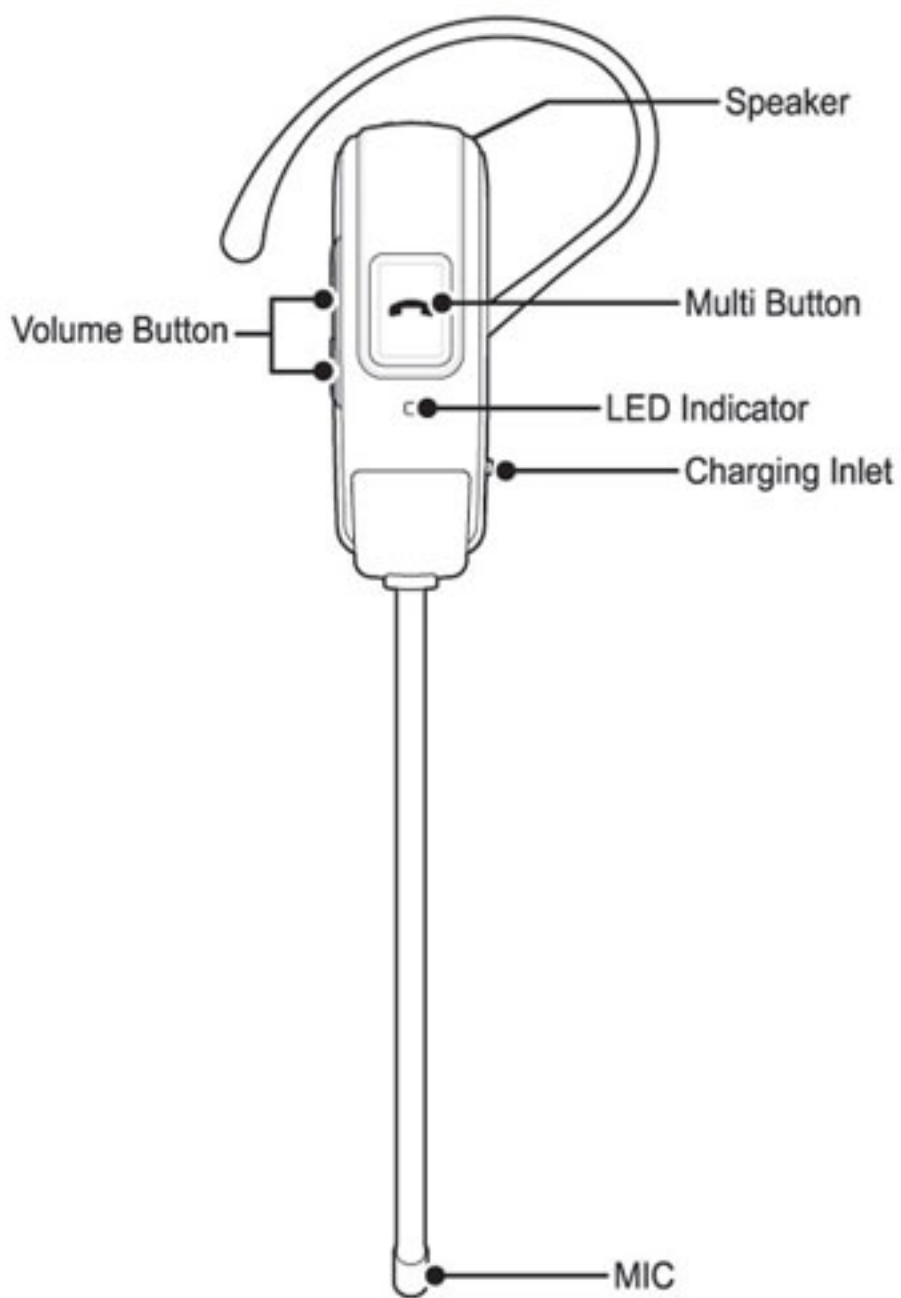
Headset: Press button for 6 seconds, the BLUE LED flashes rapidly.

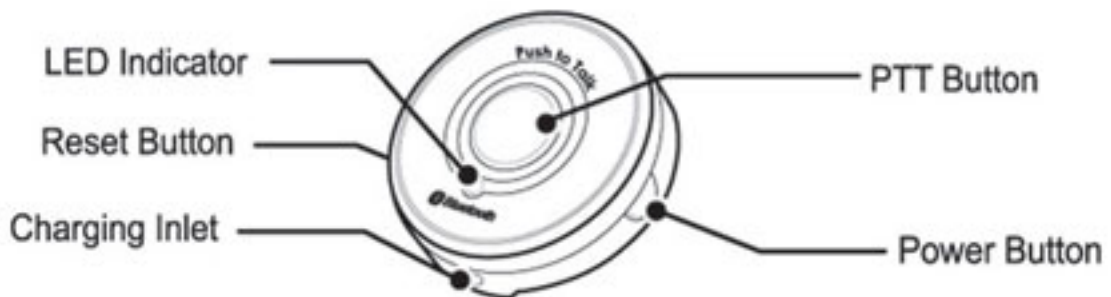
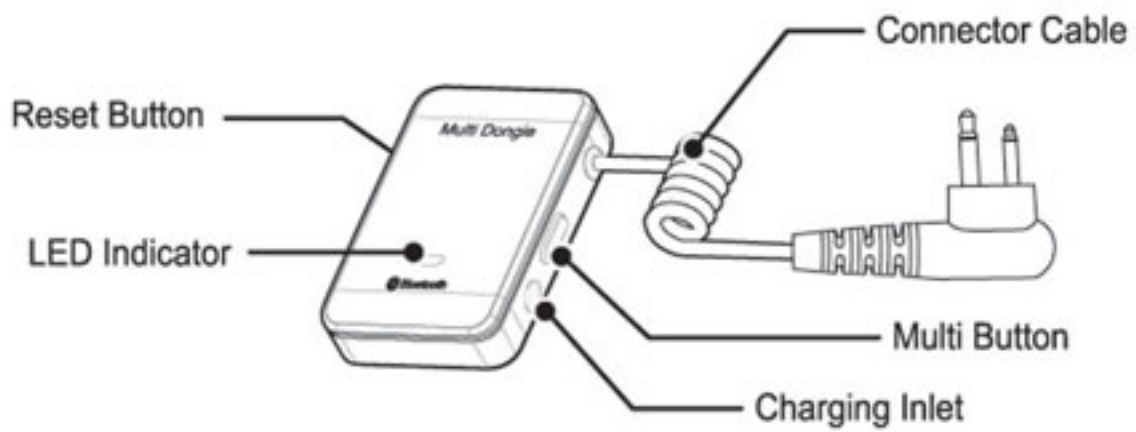
PTT: Same as the headset, but the rapid flash will be RED.

Power button is the small one on the side.

Dongle: Press button for 6 seconds, and like the headset, the BLUE LED flashes rapidly.

Now, they should link up together at this point, and change from rapid blinking to a slow blink. It may take 5 - 10 seconds.





After you pair them, if you turn them off you should NOT need to pair again.

Just turn them on. It is pretty easy:

For the Headset, press the large button for a couple seconds. The BLUE LED light turns on then goes off.

The PTT is the same, except the LED will be RED, and flashes 5 times.

The Dongle also, just press the power button (small on the side) and when on it will flash BLUE 5 times.

To turn them off, just press these buttons for 4 or 5 seconds and they shut down.

So, let's assume they are paired up and ready to use.

MOST 2-way radios require that you use that round PTT button. Try your radio without if you like, and if you don't need it, then it is your choice to use it or not.

To use, simply keep the dongle plugged into your radio, and the radio on.

Press the PTT button and hold it down while talking, releasing it to receive a transmission.

Talking time is up to 5 hours on this headset, but you can use any Bluetooth® headset you like!

Talk time on the dongle and adaptor is up to 7 hours.

Standby time is up to 200 hours.

Charging time is less than 2 hours.

WARRANTY.

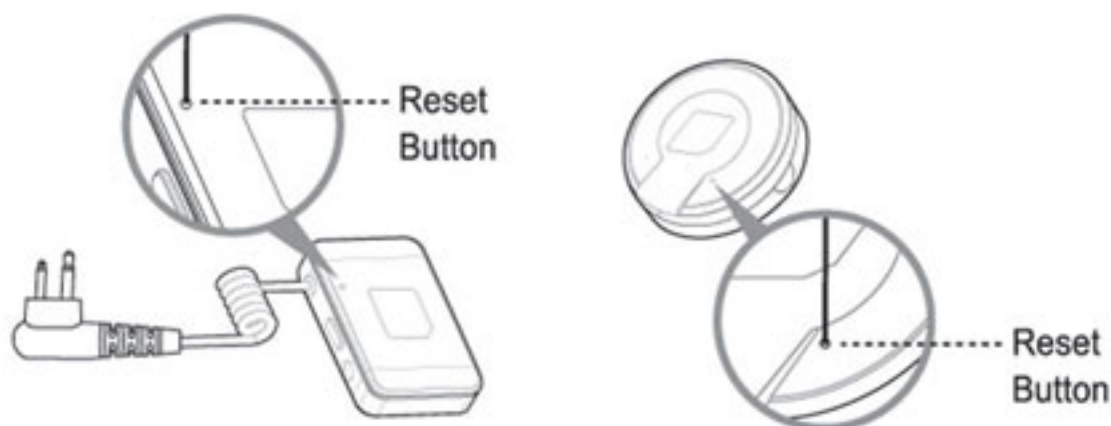
The warranty period is 90 days. It is a limited warranty, so please take care of your new Bluetooth® product.

If you cause any damage to the product such as dropping it, breaking it, or if it gets wet, it is not covered. Only a defect by the manufacturer (just stops working or didn't work out of the box) is covered.

Do not try to open any piece. The batteries are not replaceable.

We can either replace it or repair it.

If you have problems operating the device, try to reset them.



Blu-CommTM

Patent Pending. All trademarks and service marks
are the property of their respective owners.

www.RocketQuality.com